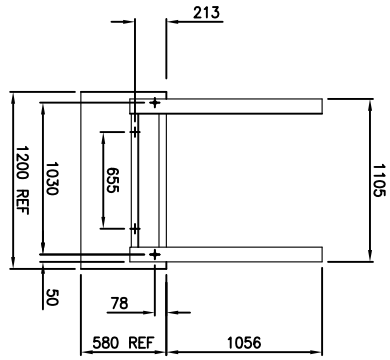


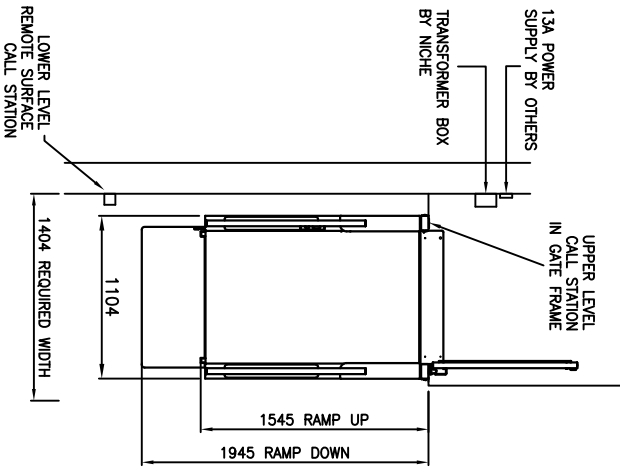
**Technical Information**

Built in Compliance with BS 6440:1999  
 Safe working load = 300Kg  
 Maximum threshold height = 1000mm  
 Lift speed = 20mm/sec  
 Ramp gradient = 1:6  
 Power supply = 230V ac 50Hz single phase & earth  
 Power Consumption = 240 Watts  
 Lift operating voltage = 24V dc  
 Battery backed raise and lowering  
 Manual emergency lowering  
 Hydraulic drive  
 Total lift unladen weight = 200Kg  
 Suitable for internal and external use

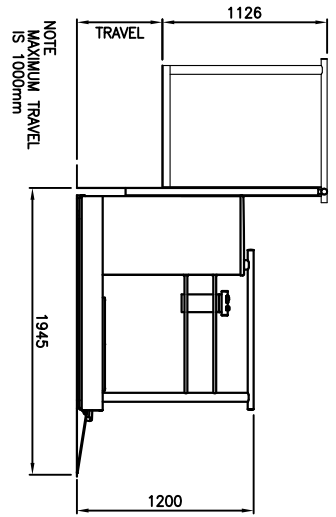
**Notes**  
 1500mm of clear space is recommended of the entrance and exit points of the lift for access.  
 A minimum of 2000mm is required above the threshold height.



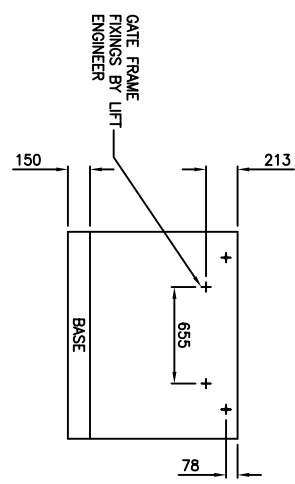
HOLES DRILLED BY INSTALLATION ENGINEERS  
 GATE FRAME FIXINGS



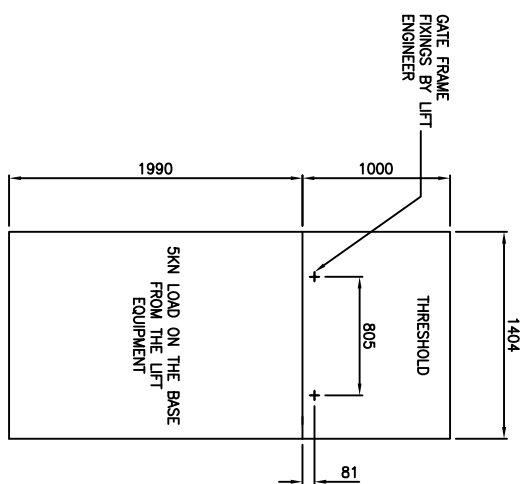
PART PLAN VIEW



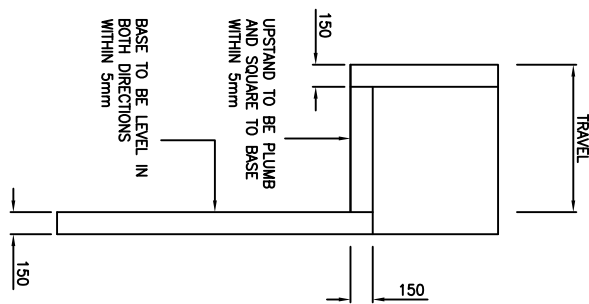
VIEW ON SIDE OF LIFT



THRESHOLD MUST BE CAPABLE OF WITHSTANDING A LOAD OF 2.5KN/FIXING.



BASE, UPSTAND AND THRESHOLD DETAIL BY OTHERS



BY	DATE	ISSUE	MODIFICATION	CHECKED

NICHE LOW RISE 900 WIDE PLATFORM LIFT LAYOUT & BUILDERS WORK

NICHE LIFTS LTD 82 St Georges Road West, Bromley, Kent, BR1 2NP Tel: 020 8295 2892 Fax: 020 8467 1044  
 e-mail: sales@nichelifts.co.uk Web Site: www.nichelifts.co.uk

NICHE LIFTS Ltd		DRAWN BY	DATE	CHECKED	SCALE
Do not scale this drawing. All dimensions in millimetres		TMP	30.10.09	NIS	
DRAWING NUMBER		1 300 / 1			